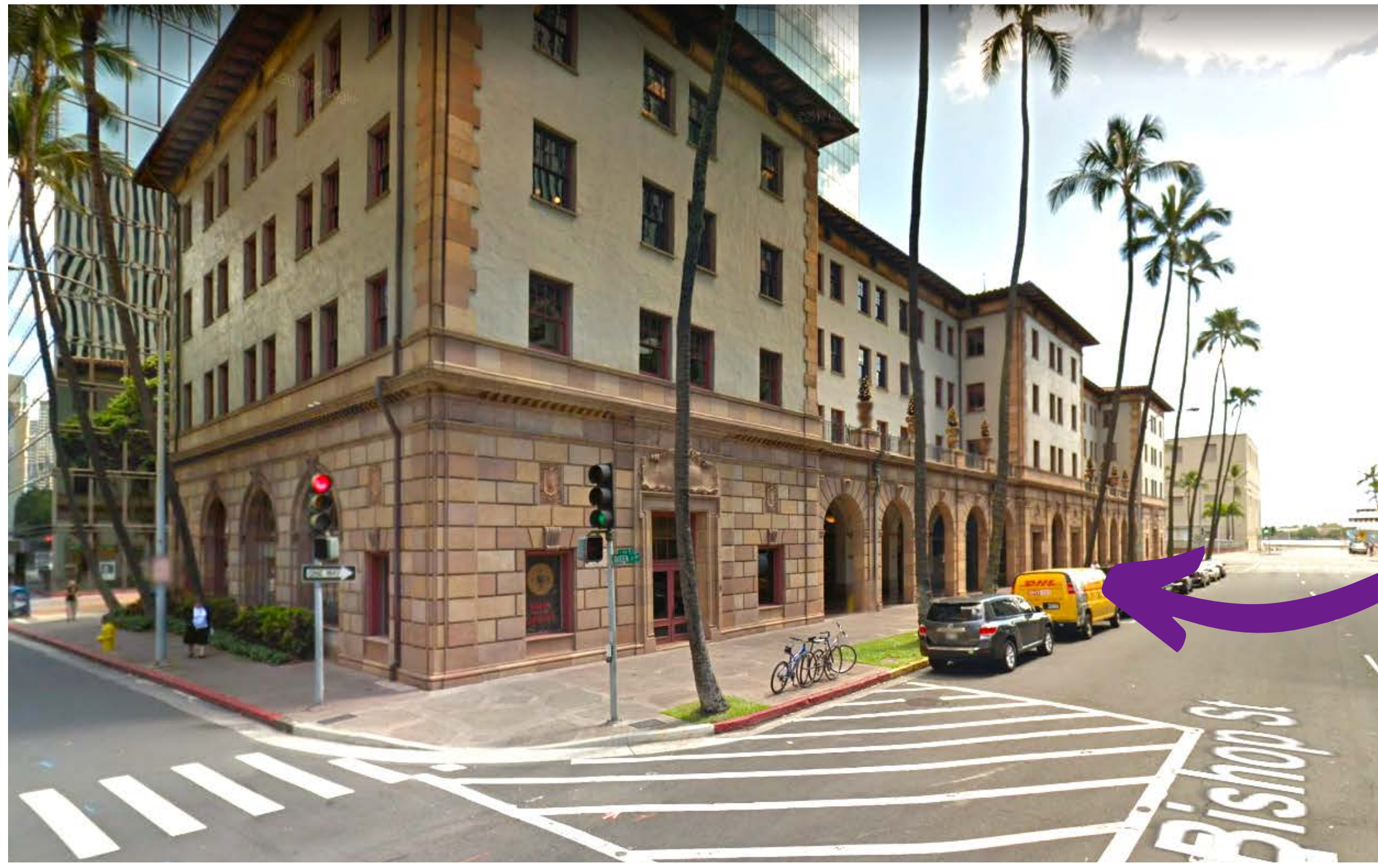


We look forward to meeting you!
Here are some tips to plan your visit.

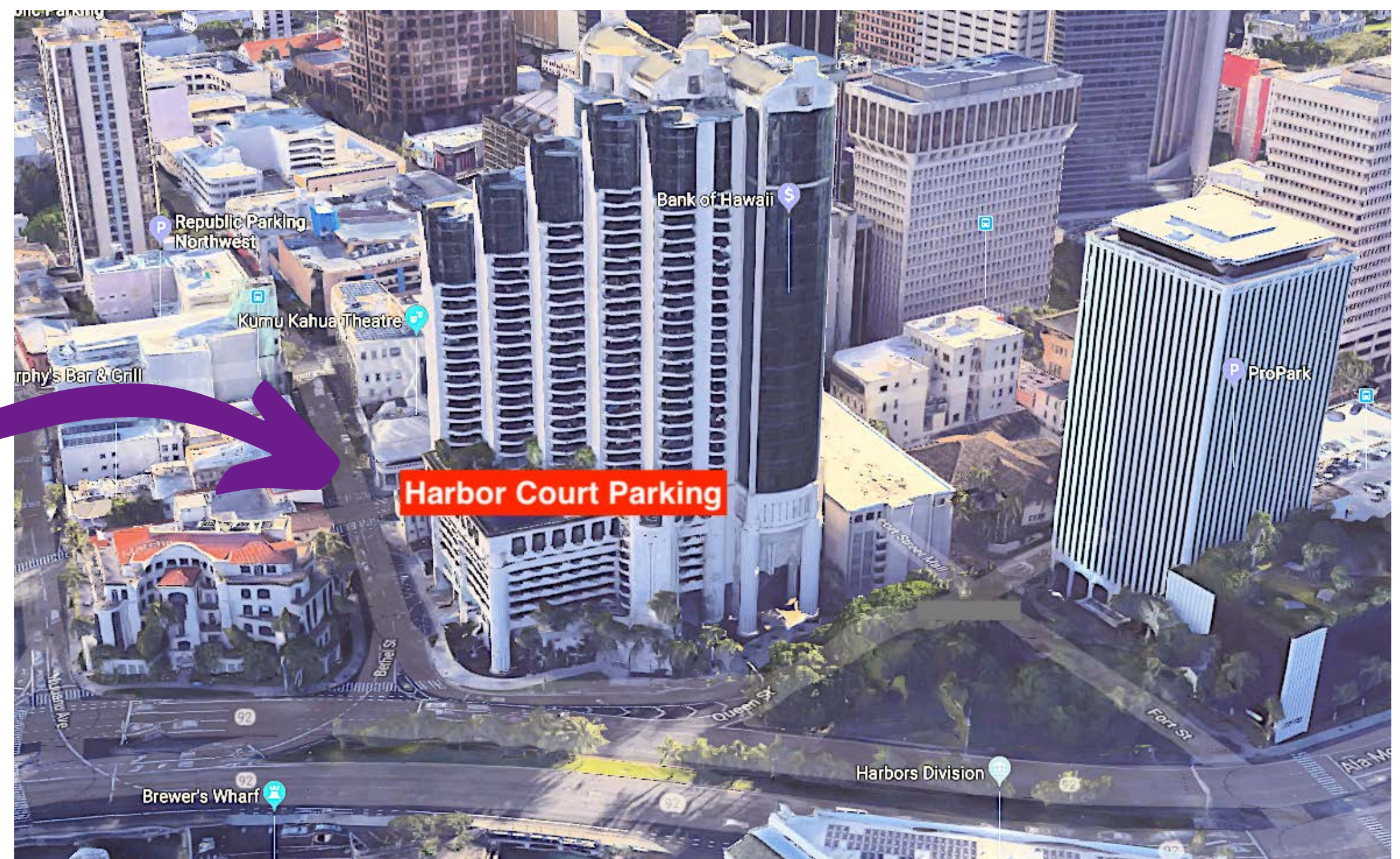


Our office is located on
the 2nd floor of the
Dillingham Transportation Building

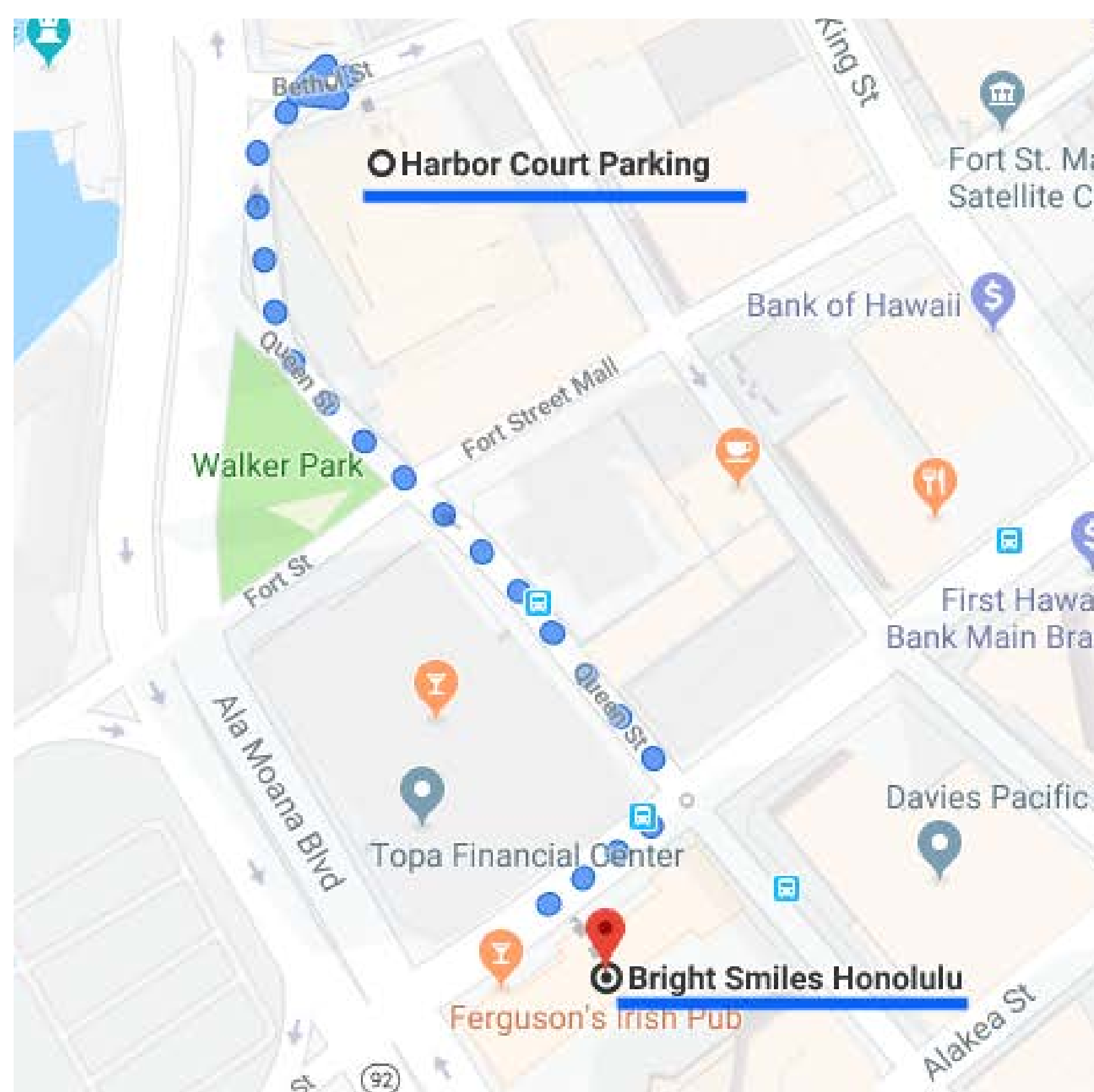
735 Bishop St. #211

We validate parking at
Harbor Court Parking
847 Bethel St.

3 minute walk from our office



Walk to Bright Smiles from Harbor Court

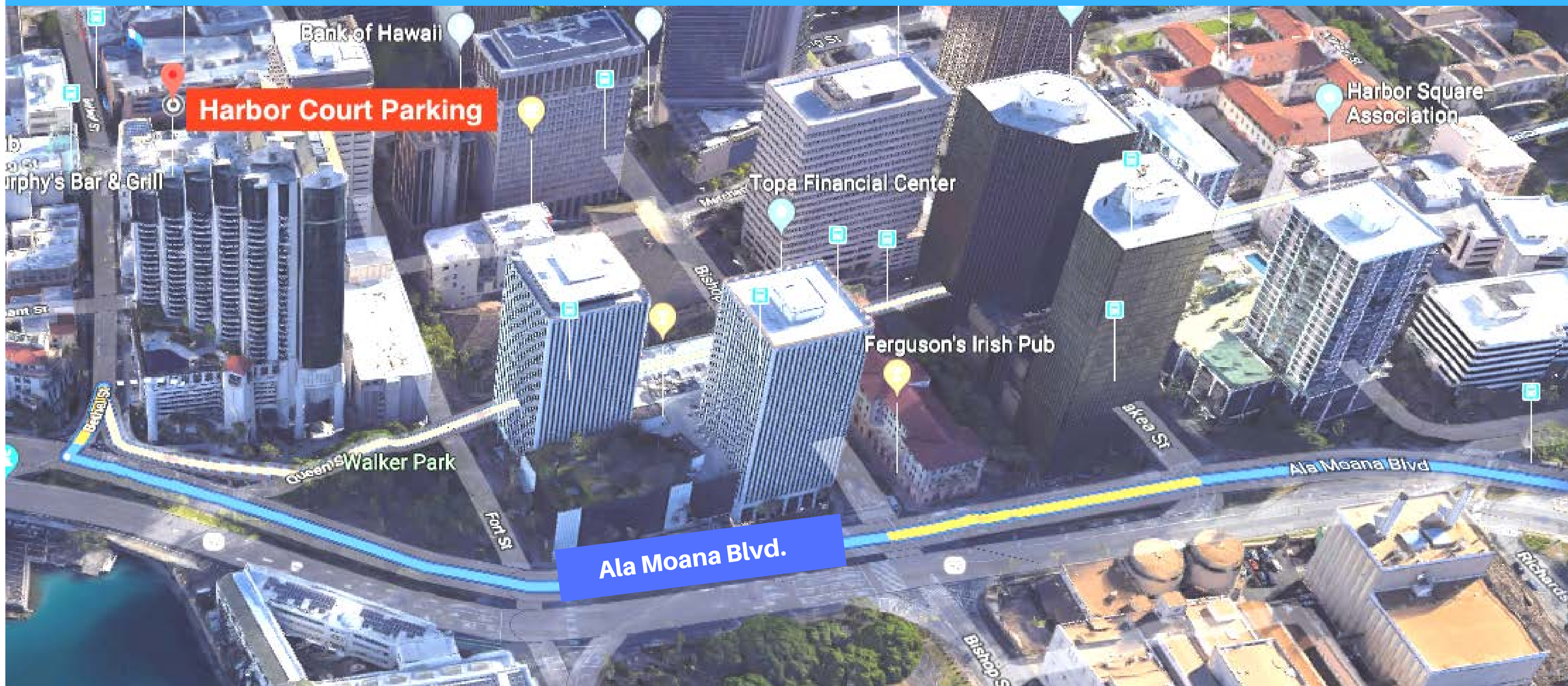


1. Exit parking elevators, turn left onto Queen St.
2. Walk along Queen St.
3. Cross the Queen St. & Bishop St. intersection
4. Enter the Dillingham Transportation Building
5. Take the elevator to the 2nd floor
6. Exit the elevator and turn right

We'll be at the end of the hall!

From Waikiki / East Ala Moana Blvd.

1. Turn onto Ala Moana Blvd.
2. Turn right at Bethel Street
3. Take immediate right into parking structure



From West

1. Merge onto H1 East towards Honolulu
2. Take exit 21A toward Pali Hwy and keep right
3. Make a right onto Pali Hwy.
4. Stay on Pali Hwy and keep left at the fork to Bishop St.
5. Take a right onto Queen St. and keep right at the fork
6. Make a right into garage on Bethel St.

